

**Chelmsford Garden Community
Council Strategy Statement 2023 - 2027**



Working to build a spirit of Community so that our area is a vibrant place to live, work within and visit and make your Forever Home

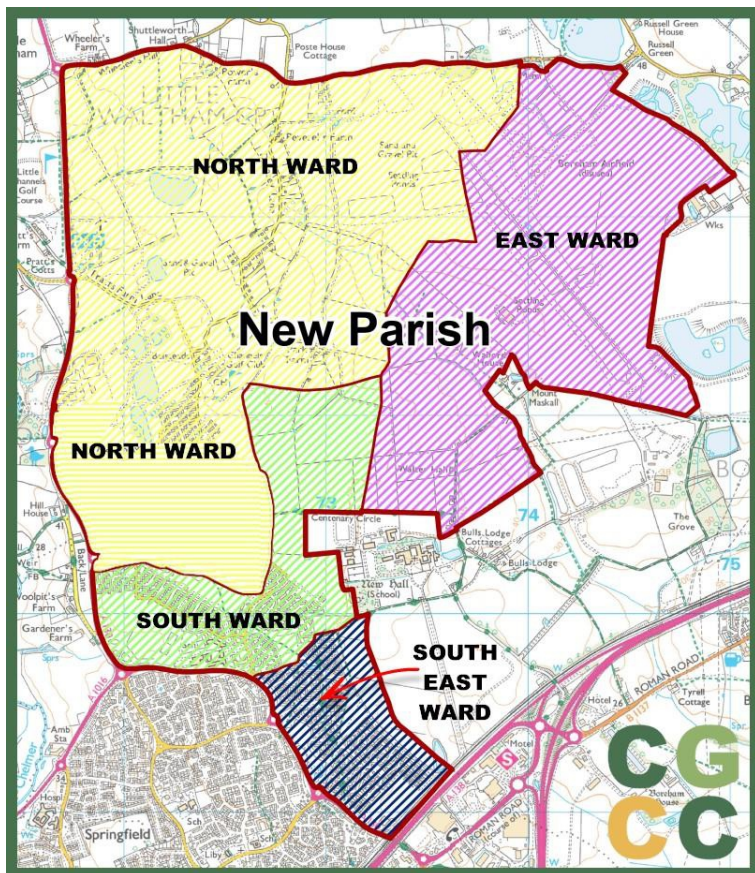
Table of Contents

Location plan	3
The Vision Statements	4
The story so far	6
Our Area	7
An Overview of Chelmsford Garden Community Council	8
Council and Officers structure	9
Financial Aspirations	10
How to contact the Council and comment	11
Councillor Contacts:	12



Location plan

Chelmsford Garden Community Council's area is to the north east of Chelmsford, the County Town of Essex



The Vision Statements

This document has been prepared in order to clearly set out the key priorities and objectives for Chelmsford Garden Community Council until 2027 and set out the **vision statements** of the Council which are

1. For Chelmsford Garden Community Council (CGCC) to be central to a thriving community where people wish to live as part of a connected and sustainable area with the needs and wellbeing of residents central to its decision making.
2. For CGCC to be a central part of the governance structure for Stewardship arrangements within its area to enable it to have appropriate oversight of arrangements on behalf of residents and to hold other partners and stakeholders to account.
3. That CGCC is central to community engagement and will work with partners to deliver services, events and initiatives that meet the needs of the community.
4. With a view to promoting a thriving community to produce strategies that consider engagement with all sections of the community and in particular in relation to youth engagement, a health and wellbeing strategy for the benefit of all residents, a first aid and emergency response strategy and a strategy in relation to climate change and sustainability and to continue to work closely with partners in relation to Community Safety.
5. To manage the Council's assets responsibly and to consider the acquisition of future assets to meet the needs of the Community and to promote community cohesion.
6. To respond to consultations and work with other local authorities and stakeholders to represent the wishes and needs of this community.
7. To appropriately resource the staffing and administration of the Council to enable it to deliver on the aspirations and aims of the Council.

The aim of the document is to give our residents a clear understanding of what the Council is trying to achieve and focus upon over the next few years. It should also be recognised that this Council is not responsible for certain service / asset provision within the area which may be down to other local authorities or management companies such as land management or road management thus there is a limit to what the Council can achieve. Nevertheless, the Council intends to be vocal on behalf of the Community in seeking to hold others to account and representing the views and interests of its residents so far as it is able. This document is a living document which will be kept under review and will also inform future annual strategic planning and budget provision.

So as to be able to best represent the needs of the Community it is also a firm intention for the Council to publicise itself so that residents know about the Council and what it does together with who to contact in each ward.



The story so far

2023 has seen a whirlwind of activity in setting up the new Chelmsford Garden Community Council in order to provide better Governance and representation for this growing community. Following the Local Government re-organisation which resulted in this new Council being formed in April 2023, Councillors recognised that there is much to do to both represent and unite the various areas it encompasses including the new Chelmsford Garden Community which will add four new villages, new homes, businesses, leisure & community facilities, schools, and a railway station.

Therefore the Council sees itself as modern and innovative in finding ways to serve its community, listening to residents and ascertaining their needs and delivering services to them to serve those needs and at the same time fostering the community spirit to vital to forming a vibrant place to live. The Council and is strongly committed to the ethos of community.

So far in 2023, the Council has set up the basic practices, documentation and procedure to make sure that its Governance is robust for the Community. It has engaged in both planning and wider consultations impacting upon the Community. It has engaged in the ongoing negotiations regarding the future Stewardship of land and assets as the Community grows with the predominant aim of ensuring that such arrangements are 'community led.' It has engaged with local stakeholders including schools, local health providers, bus companies, community groups, the Police and development consortia. In order to listen and engage with residents it has hosted Councillor drop in events, a Community Safety event, Coffee with Cops and Councillors and is planning a dog event and also a major event in 2024 to commemorate D Day. It has engaged with the Community by providing information on its website and Facebook group in relation to a host of issues of local interest including development updates.

It is planning for the future and working on strategies to enable it to engage with areas of youth engagement, health and wellbeing, Climate change and biodiversity. It is also considering a range of events and services that can either be provided by the Council or by way of engagement with other partners and looking at how to work with Community Groups including the Chelmsford Garden Community Trust (formerly the Beaulieu Community Trust) that manages the Community Centre.

This statement sets out the overarching aims by which the Council will work and each year the statement will be considered against a more detailed strategy statement relating to the specific financial year which will set out deliverable outcomes for that year.

Take a look on this website for information about ways in which you can engage with Councillors, attend meetings and events and make sure your voice is heard in our exciting new Community!

Our Area

The Chelmsford Garden Community Council area lies north east of Chelmsford, the County Town of Essex. For many years, the area has been predominantly rural farming land with manors dating back to Norman times. The railway line is close to the borders of our Parish and it was that innovation in the 1800s that turned the town of Chelmsford from a market town into an industrial centre. Our area in particular saw a dramatic change during the Second World War when land was requisitioned and used as an airfield for the American Air Force. This area, known as Boreham Airfield, was subsequently used to house displaced families awaiting housing after the war, then a motor racing circuit followed by a vehicle test track and a base for Essex Police, particularly their helicopter, and now forms part of a quarry.

Over the last 30 years, Chelmsford has become less industrialised but has continued to expand as a desirable place to live and was awarded city status in 2012. Our area is now earmarked in the Chelmsford City Council local plan as a particular area for development. In 2001 the construction of Beaulieu Park commenced and over more recent years, new areas of Beaulieu and Channels have been added. New development continues apace and once the quarry workings have been completed that land will be included in the new Chelmsford Garden Community which will comprise four new villages, offering a balance of new homes, businesses, leisure & community facilities and schools. A new Railway station is being constructed close to the border of this Parish which will be the first station on the Eastern main line in 100 years.

Our area is in an ideal location in close proximity to Chelmsford, and also with good road and rail links to London and also to the beautiful countryside of north Essex and beyond and coastal Essex as well. In forming the new Council it has been recognised that it will provide direction and focus to enable the area to become its own community and thrive.

An Overview of Chelmsford Garden Community Council

Chelmsford Garden Community Council was formed on 1st April 2023, following a re-organisation of Parishes by Chelmsford City Council having had regard to the substantial amount of new development in the north east Chelmsford area. The Council comprises 13 democratically elected Councillors. They will serve for a period of four years up to May 2027 when the next local elections will take place. The Council area is divided into four wards as follows:

North Ward	5 Councillors
East Ward	2 Councillors
South Ward	3 Councillors
South East Ward	3 Councillors

The Council is a corporate body which makes decisions at the meetings attended by Councillors and through delegation to committees which are aided by working groups in discharging their functions in line with the Council's constitution which comprises standing orders, financial regulations, committee terms of reference and a scheme of delegation.

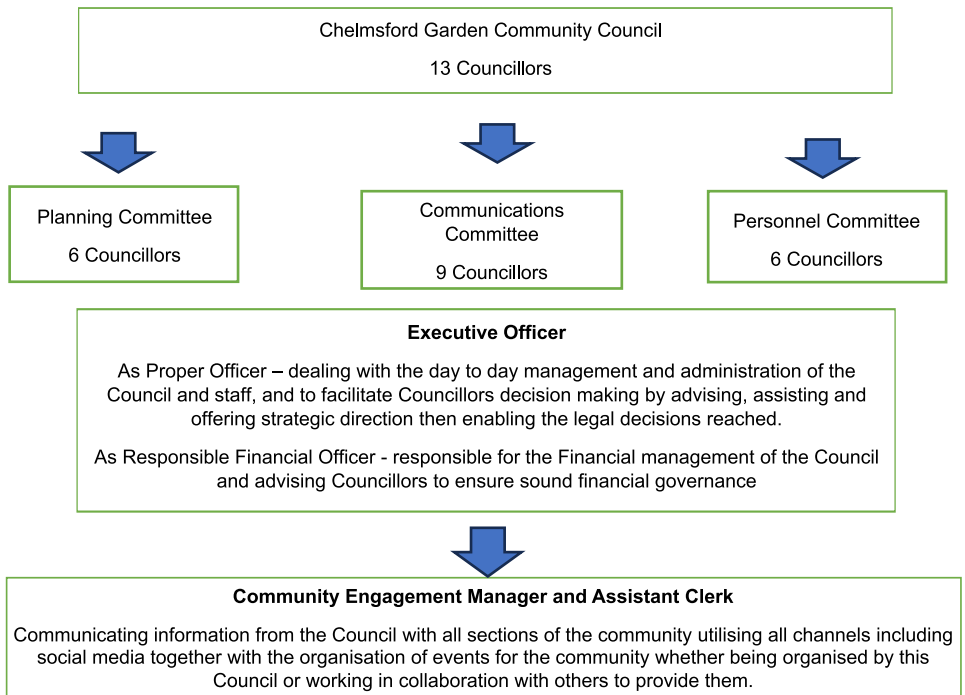
The main Council meeting takes place on the first Thursday of each month. In addition, there are 3 committees which are the planning committee which meets to consider representations in relation to planning issues, Personnel, to deal with all areas of staffing issues and a Communications committee to deal with all issues relating to internal and external communications, liaison with residents and events.

Working groups provide a discussion forum in order to research the background of issues and feedback to the Council and assist in the progress of strategies and the planning of events and cover specific event planning, youth strategy, health and wellbeing and emergency response strategy and climate change and biodiversity strategy.

Supporting the Council is the Executive Officer, who is the Proper Officer and Responsible Financial Officer and the Community Engagement Manager and Assistant Clerk who deals predominantly with outward facing communications and deputises for the Executive Officer in her absence..

The Council is predominantly funded via the precept which forms part of the Council Tax levied upon all residents. For financial year 2024 - 2025 the lump sum that will be received by the Council will be £217,723.00 and that results in a band D payment of £60.69

Council and Officers structure



Financial Aspirations

In setting budgets moving forward, the aspirations will be to set money aside for the following specific areas:

- The administrative costs of running the Council
- Community engagement, activities and support
- To support the running of community centres in the area
- Stewardship within the Community
- To support the delivering of Health and Wellbeing projects for the Community
- To support Youth engagement in the area.
- To support Climate change initiatives in the area.

How to comment on this document and contact the Council

Views about the work of this Council are always welcomed as are ideas for further initiatives and service delivery. If you have views on what is important to this area and which the Council can have an impact upon do let us know.

Comments can be made in writing to –

Chelmsford Garden Community Council
Beaulieu Community Centre
17 Centenary Way
Chelmsford Garden Community
Chelmsford, Essex
CM1 6AU

Or for a quicker response –

Email – clerk@chelmsfordgardencommunitycouncil.gov.uk

Phone – 01495 473240

Or use the contact form on the Council website
www.chelmsfordgardencommunitycouncil.gov.uk

Or come and visit us –

Come to a Councillor drop in session, a community event or a Council meeting details of which are published on the website. You can also sign up for updates on the website which will be sent direct to your inbox via email.

Updates will also appear on social media on the Council's Facebook page

Councillor Contacts:

North Ward

Andrew Wright (also the Chair)	cllr.a.wright@chelmsfordgardencommunitycouncil.gov.uk
Joel Alderman	cllr.j.alderman@chelmsfordgardencommunitycouncil.gov.uk
Kuldeep Golla	cllr.k.golla@chelmsfordgardencommunitycouncil.gov.uk
Tayo Udoh	cllr.t.udoh@chelmsfordgardencommunitycouncil.gov.uk
Melanie Williamson	cllr.m.williamson@chelmsfordgardencommunity.gov.uk

South Ward

Cynthia Driver	cllr.c.driver@chelmsfordgardencommunitycouncil.gov.uk
Romilly Wakeling	cllr.r.wakeling@chelmsfordgardencommunitycouncil.gov.uk
Chloe Tron	cllr.c.tron@chelmsfordgardencommunitycouncil.gov.uk

East Ward

Derek Drew-Smith	cllr.d.drew-smith@chelmsfordgardencommunitycouncil.gov.uk
Neil Shah	cllr.n.shah@chelmsfordgardencommunitycouncil.gov.uk

South East Ward

Daniel Jeffreys	cllr.d.jeffrey@chelmsfordgardencommunitycouncil.gov.uk
Brian Jeapes	cllr.b.jeapes@chelmsfordgardencommunitycouncil.gov.uk
Jeremy Stopher	cllr.j.stopher@chelmsfordgardencommunitycouncil.gov.uk